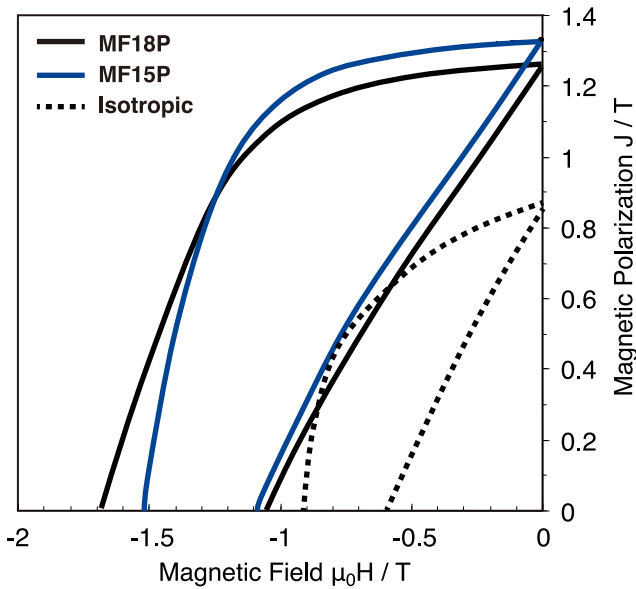


New

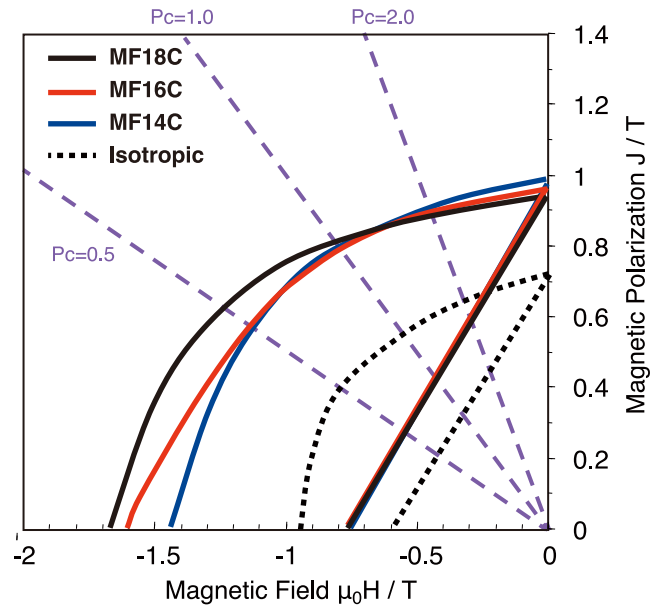
# MAGFINE<sup>®</sup> *NdFeB Anisotropic Resin-Bonded Magnet*

## 1. Demagnetization Curve (B-H, 4πI-H)

### Powder



### Compression Molded



## 2. Magnetic Characteristics

		MAGFINE					Isotropic
		Powder		Compression			Compression
		MF15P	MF18P	MF14C	MF16C	MF18C	
(BH) <sub>max</sub>	MGOe	38.0	35.0	22.0	20.0	19.5	10.0
Br	kG	13.2	12.5	9.8	9.5	9.5	7.0
iH <sub>c</sub>	kOe	14.0	17.0	14.0	16.0	18.0	9.5
α	%/°C	—	—	-0.11	-0.11	-0.11	-0.13
β	%/°C	—	—	-0.56	-0.47	-0.46	-0.33